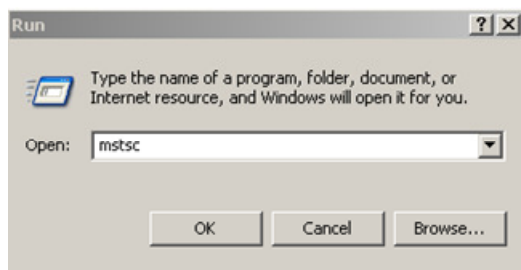


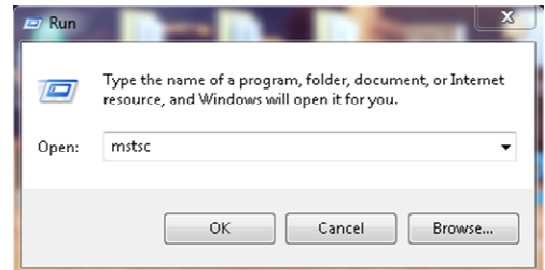
# Accessing Remote Desktop From Outside the District Network Using MSTSC

1. Choose Start > Run
2. Type **mstsc**

*Windows XP*



*Windows 7*

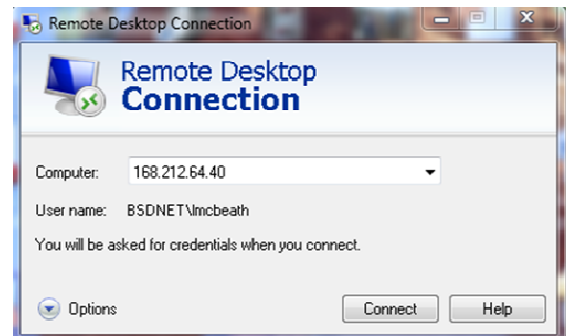


3. Click OK
4. Type **168.212.64.40** in the computer name field

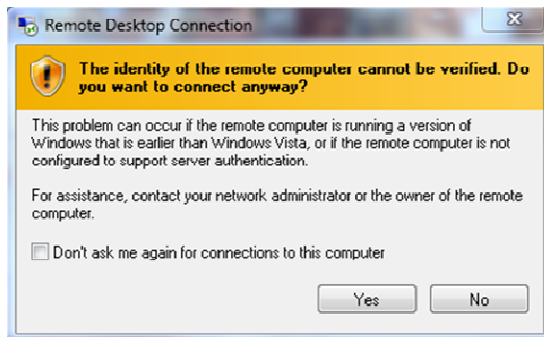
*Windows XP*



*Windows 7*



5. Click Connect
6. IF you get the following warning, click yes:



7. Logon to the remote system with your logon and password, the same as you would if you were sitting at your desk.

