

Ends 2.1 Monitoring Report Data Set
Part 2 - Post-Secondary and Career-Ready Course Participation

Table of Contents

	Page
(1) <u>Bellingham School District College- and Career-Ready Course Study</u> Student participation in dual credit courses, AVID, career and technology education completers and students taking high school credit courses in middle school	1
(2) <u>High School Dual Credit Representation by Student Groups and Districts</u> Percent participation by student groups in dual credit courses compared to the student groups' percentage of the entire population for Bellingham and Bellevue School Districts	2
(3) <u>Comparable Districts Advanced Placement and SAT Data</u> Participant counts and achievement on College Board AP and SAT exams for the selected comparable districts	3
(4) <u>Student Demographics for Comparable Schools Selection</u> Student demographics from 2013-14 school year by high school	4
(5) <u>Comparable Schools Advanced Placement and SAT Data</u> Participant counts and achievement on College Board AP and SAT exams for the selected comparable schools	5

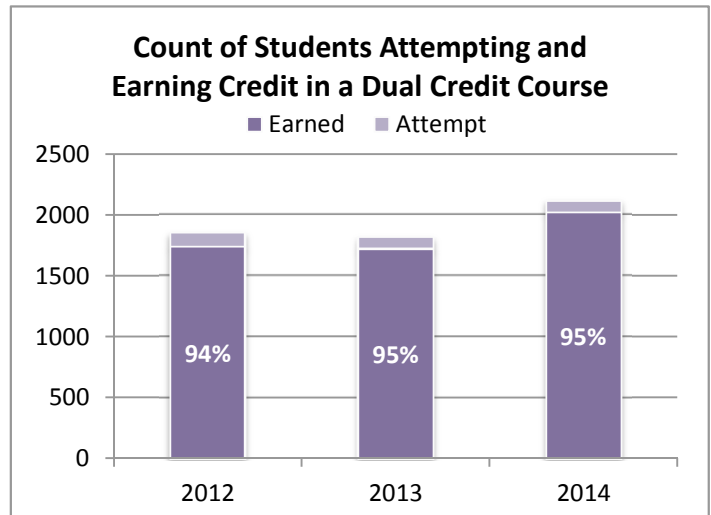
Bellingham School District College- and Career-Ready Course Participation

Student Course Enrollment by School Year

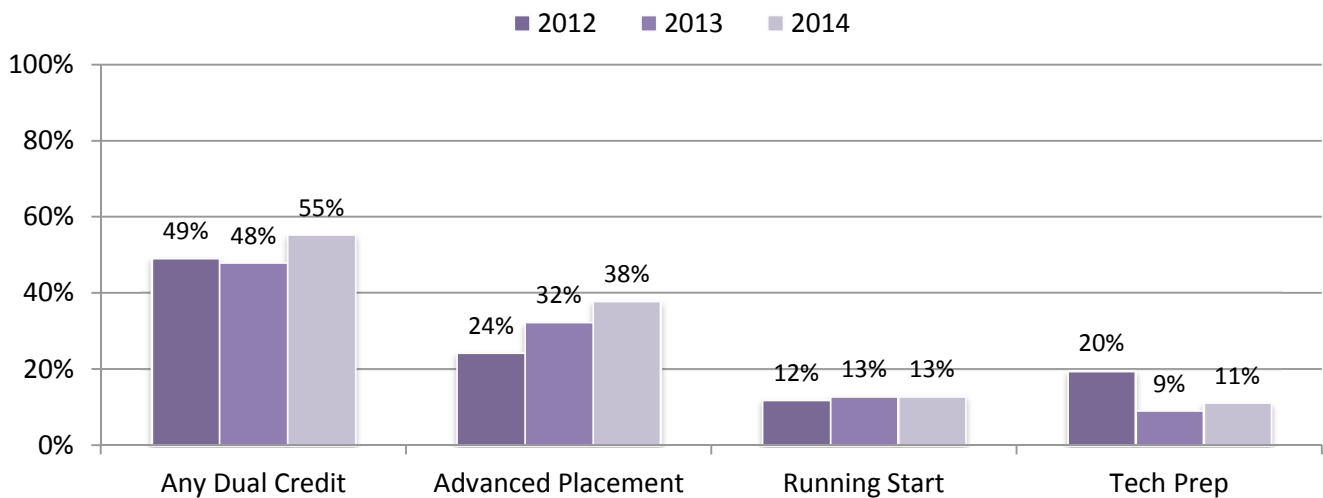
		2012	2013	2014
Any Dual Credit	Attempt	1853	1818	2114
	Earned	1739	1722	2017
Advanced Placement		912	1226	1445
College in the HS		--	--	66
Running Start		453	489	495
Tech Prep		740	344	426
AVID*		124	113	169

*AVID is not a Dual Credit course

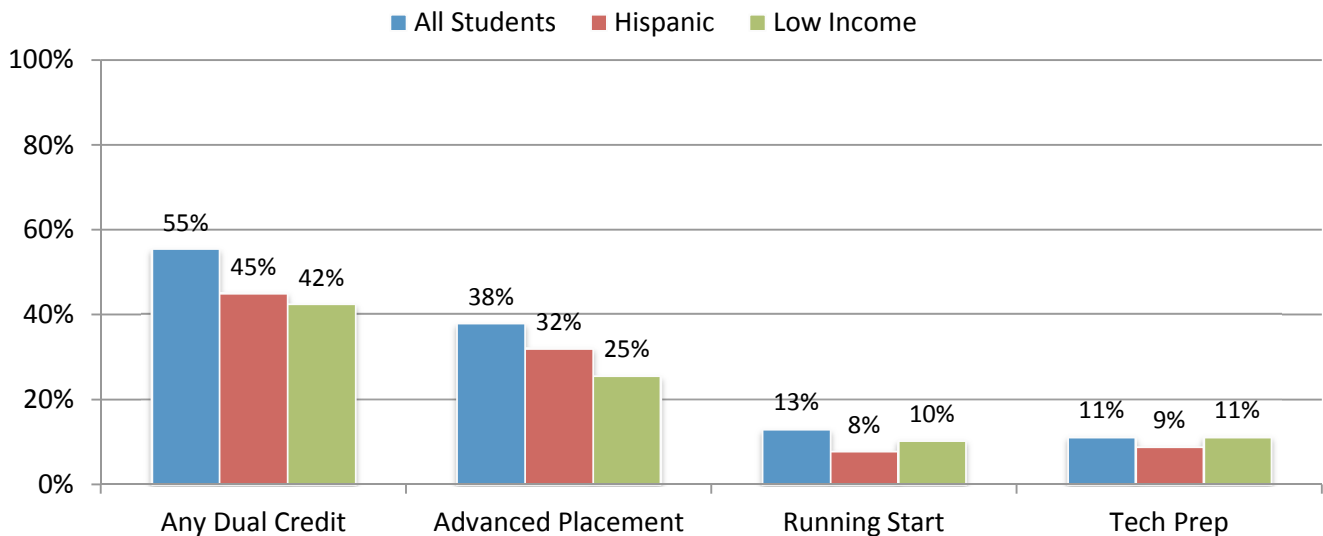
	2012	2013	2014
CTE Completers	108	141	190
MS students taking high school credits	659	749	638



Percent of Students Attempting Dual Credit Courses by School Year



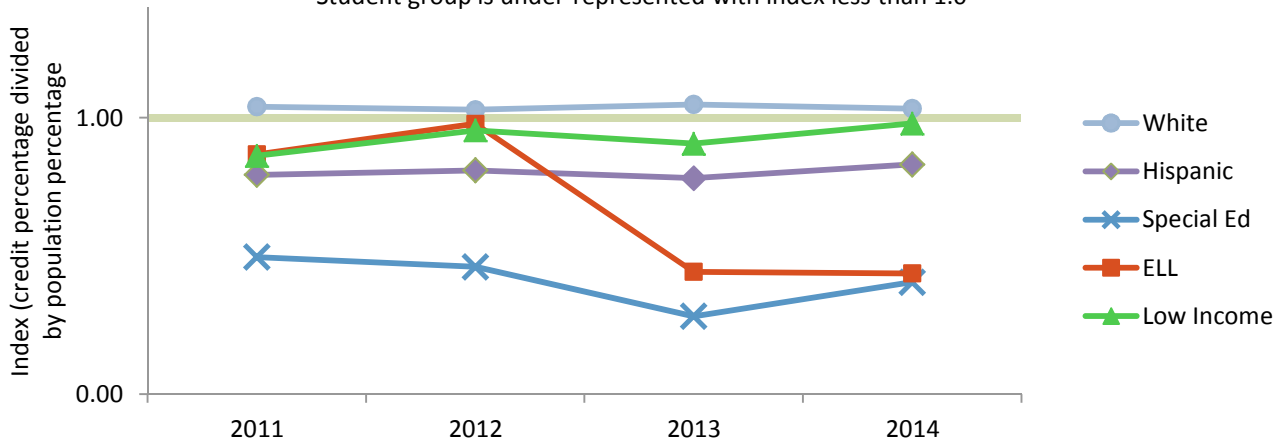
2014 Percent of Students with Dual Credit Attempts by Student Group



High School Dual Credit Representation by Student Groups and Districts

Bellingham School District Dual Credit Representation

Student group is under-represented with index less than 1.0

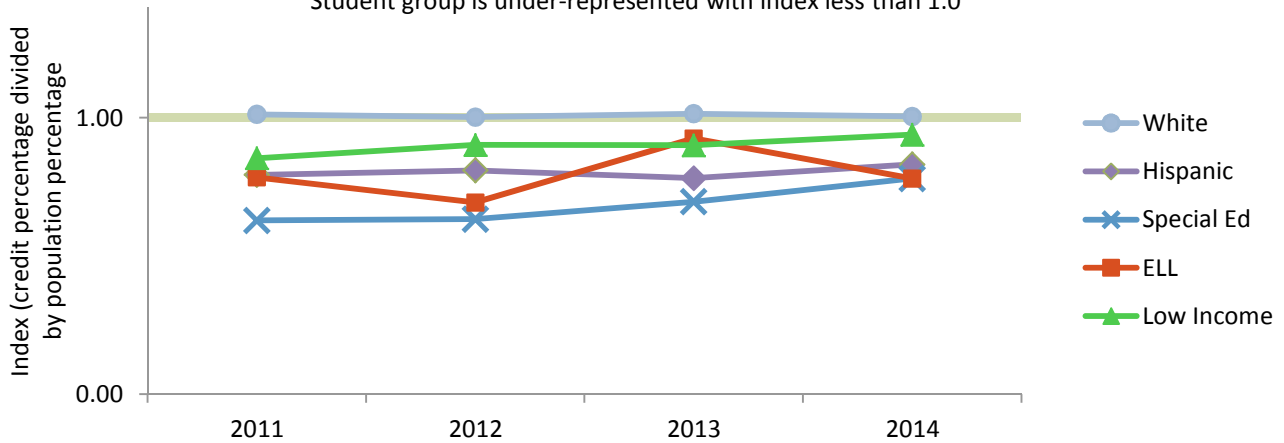


Bellingham Dual Credit Enrollment and High School Population by Student Groups

	2011		2012		2013		2014	
	Credits	Base Pop	Credits	Base Pop	Credits	Base Pop	Credits	Base Pop
White	82%	79%	78%	76%	76%	72%	73%	71%
Hispanic	9%	11%	10%	13%	11%	13%	11%	14%
Low Income	28%	33%	31%	33%	28%	31%	29%	30%
ELL	2%	3%	2%	2%	1%	2%	1%	3%
Special Ed	5%	10%	5%	11%	3%	11%	5%	12%

Bellevue School District Dual Credit Representation

Student group is under-represented with index less than 1.0



Bellevue Dual Credit Enrollment and High School Population by Student Groups

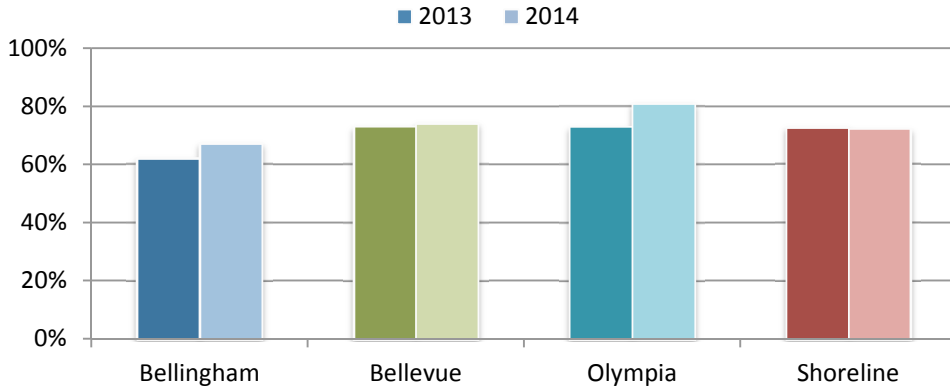
	2011		2012		2013		2014	
	Credits	Base Pop	Credits	Base Pop	Credits	Base Pop	Credits	Base Pop
White	53%	52%	50%	50%	49%	48%	47%	47%
Hispanic	7%	9%	9%	9%	8%	10%	9%	11%
Low Income	18%	21%	19%	21%	19%	21%	19%	20%
ELL	4%	5%	3%	5%	4%	5%	4%	5%
Special Ed	6%	10%	4%	7%	6%	8%	5%	7%

Comparable Districts Advanced Placement and SAT Data

Advanced Placement

District	Test Takers		Total Exams Taken		# of Exams Scored 3, 4 or 5		% of Exams Scored 3, 4 or 5	
	2013	2014	2013	2014	2013	2014	2013	2014
Bellingham	1072	1189	1856	2026	1152	1362	62%	67%
Bellevue	3,067	3,172	6,824	7,043	4,980	5,217	73%	74%
Olympia	426	437	769	812	562	657	73%	81%
Shoreline	594	646	1021	1120	741	808	73%	72%

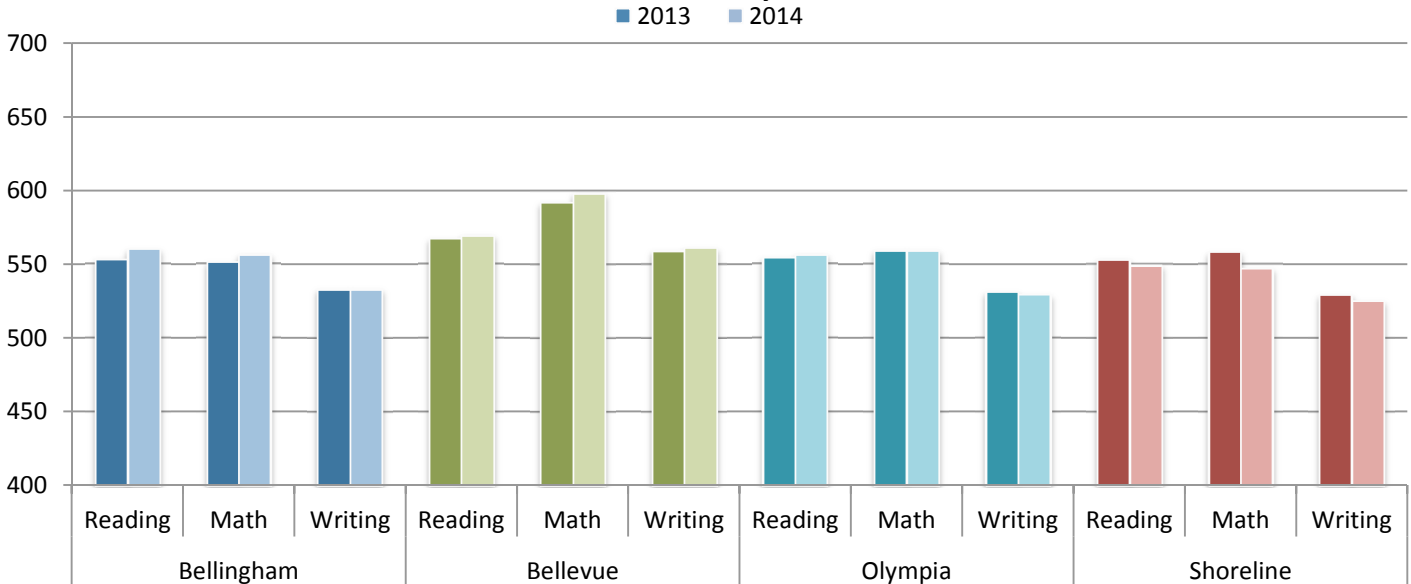
Percent of AP Exams Scored 3, 4 or 5



SAT

District	Test Takers		Reading Mean		Math Mean		Writing Mean	
	2013	2014	2013	2014	2013	2014	2013	2014
Bellingham	464	471	553	560	551	556	533	533
Bellevue	1,181	1,098	567	569	592	598	559	561
Olympia	461	455	554	556	559	559	531	529
Shoreline	452	451	553	549	558	547	529	525

SAT Mean Scores by District



Student Demographics for Comparable Schools Selection

2013-14 Student Demographics by High School

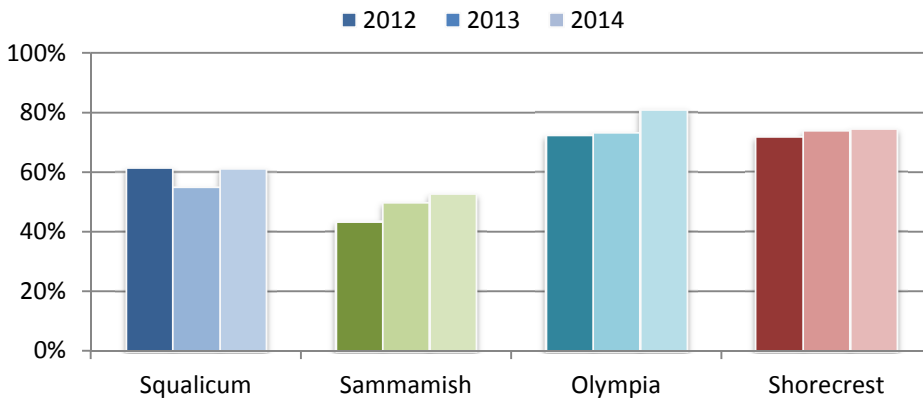
	High School: District:	Squalicum Bellingham	Sammamish Bellevue	Olympia Olympia	Shorecrest Shoreline
Enrollment					
Student Count		1,337	988	1,578	1,268
Gender					
Male		51.3%	52.7%	50.6%	52.1%
Female		48.7%	47.3%	49.4%	47.9%
Ethnicity					
American Indian / Alaskan Native		1.4%	0.5%	0.3%	0.3%
Asian or Pacific Islander		9.3%	19.3%	9.5%	13.9%
Black		0.8%	5.8%	2.0%	7.6%
Hispanic		17.8%	20.1%	8.6%	11.5%
White		64.1%	46.4%	70.8%	57.3%
Special Programs					
Free or Reduced-Price Meals		37.2%	41.7%	18.0%	26.0%
Special Education		12.2%	10.8%	6.8%	8.7%
Transitional Bilingual		5.5%	10.4%	0.5%	4.0%
Migrant		0.5%	0.0%	0.0%	0.0%
Section 504		6.2%	5.1%	4.0%	8.2%
Foster Care		0.7%	0.1%	0.7%	0.6%
Graduation Rates					
Adjusted 4-Year Grad Rate (2013)		80.1%	88.9%	84.0%	85.1%
Adjusted 5-Year Grad Rate (2012)		74.8%	89.9%	93.6%	86.7%
MSP/HSPE					
10th Grade HSPE Reading		84.3%	88.6%	94.3%	93.3%
10th Grade HSPE Writing		76.3%	87.7%	94.3%	90.1%

Comparable Schools Advanced Placement and SAT Data

Advanced Placement

High School	Test Takers			Total Exams Taken			# of Exams Scored 3, 4, 5			% of Exams Scored 3, 4, 5		
	2012	2013	2014	2012	2013	2014	2012	2013	2014	2012	2013	2014
Squalicum	428	578	662	701	995	1071	431	547	655	61%	55%	61%
Sammamish	638	558	539	1221	999	992	530	496	522	43%	50%	53%
Olympia	364	423	433	650	765	805	470	560	651	72%	73%	81%
Shorecrest	281	292	285	457	476	463	328	351	344	72%	74%	74%

Percent of AP Exams Scored 3, 4 or 5



SAT

High School	Test Takers			Reading Mean Score			Math Mean Score			Writing Mean Score		
	2012	2013	2014	2012	2013	2014	2012	2013	2014	2012	2013	2014
Squalicum	143	179	188	529	535	536	544	543	545	505	516	509
Sammamish	169	163	155	503	515	522	539	531	542	502	496	513
Olympia	264	277	259	571	562	565	584	572	579	548	535	535
Shorecrest	219	206	190	555	556	563	553	559	560	533	535	541

SAT Mean Scores by School

