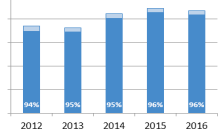


Ends Monitoring Report 2.1, Part 2 - Data Table of Contents

Page

1) Bellingham School District Dual Credit Participation

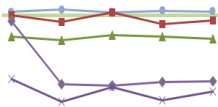
1



Student participation and success in dual credit courses for All, Hispanic and students participating in the free/reduced meal program

2) High School Dual Credit Representation by Student Groups and Districts

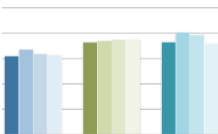
2



Student group participation in dual credit courses compared to each group's overall population for Bellingham and select comparable districts

3) Advanced Placement Exam Performance for Select Comparable Districts and Schools

4



Participant counts and achievement on College Board AP exams for the select comparable districts and schools

4) Student Demographics for Comparable Schools Selection

5

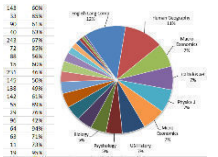
Gender	2015-16	2014-15
Male	50.9%	51.8%
Female	49.1%	48.2%

Ethnicity	2015-16	2014-15
American Indian / Al. Nation	1.6%	0.7%
Asian	5.5%	20.1%
Native Hawaiian / Pacific Isl.	0.2%	0.2%
Black	1.2%	5.6%
Hispanic	19.6%	17.8%
White	60.4%	48.2%
Two or More Races	6.8%	8.7%

Student demographics from 2015-16 school year by high school

5) Bellingham School District Advanced Placement Exam Subjects and Success

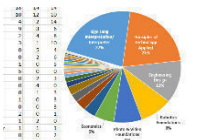
6



Counts of College Board AP test takers and benchmark scores by subject for Bellingham in 2015

6) Bellingham School District Career and Technology Education Participation

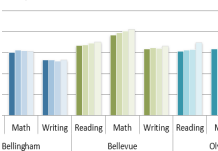
7



Student participation in Career and Technical Education including CTE Completers and Industry Certificates from 2014 to 2016

7) SAT Exam Performance for Select Comparable Districts and Schools

8



Participant counts and achievement on College Board SAT exams for the select comparable districts and schools

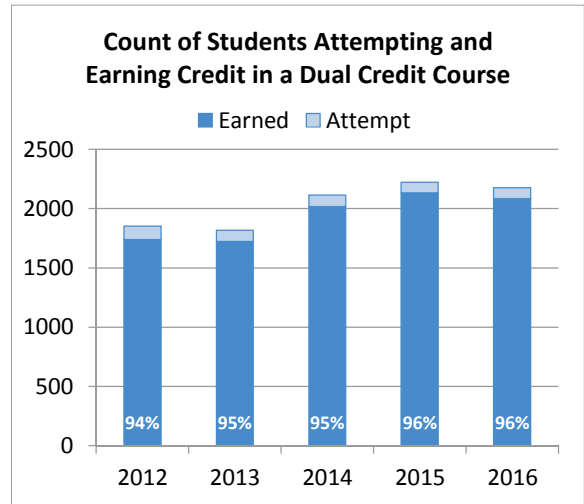
1) Bellingham School District Dual Credit Course Participation

Student Course Enrollment by School Year

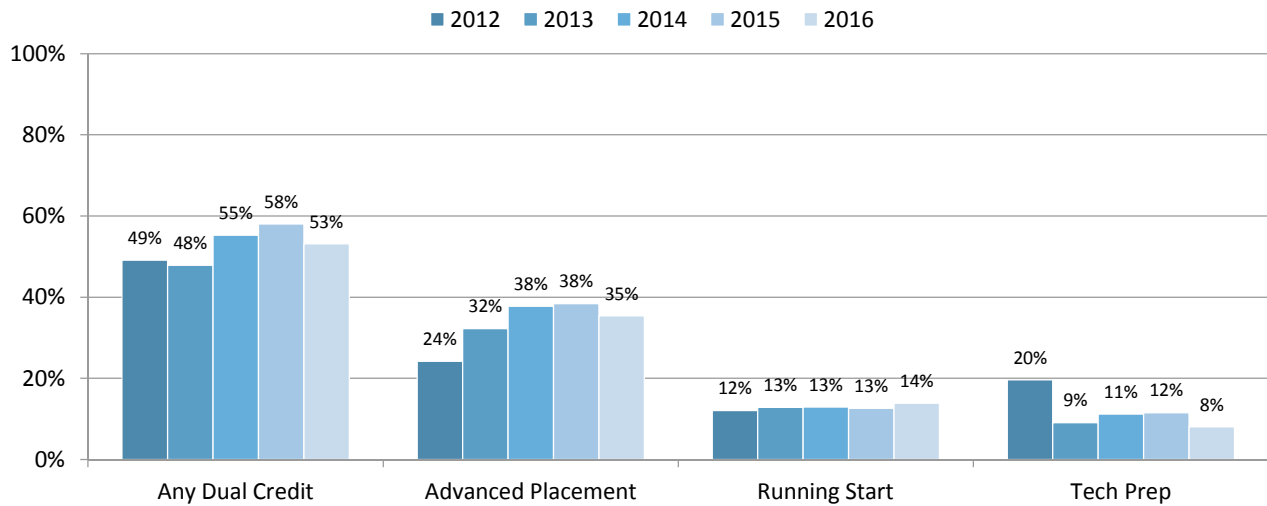
	2012	2013	2014	2015	2016
Dual Credit Attempts	1853	1818	2114	2223	2085
Dual Credit Earned	1739	1722	2017	2133	1994
Percent earned of attempted credits	94%	95%	95%	96%	96%

Type of Dual Credit

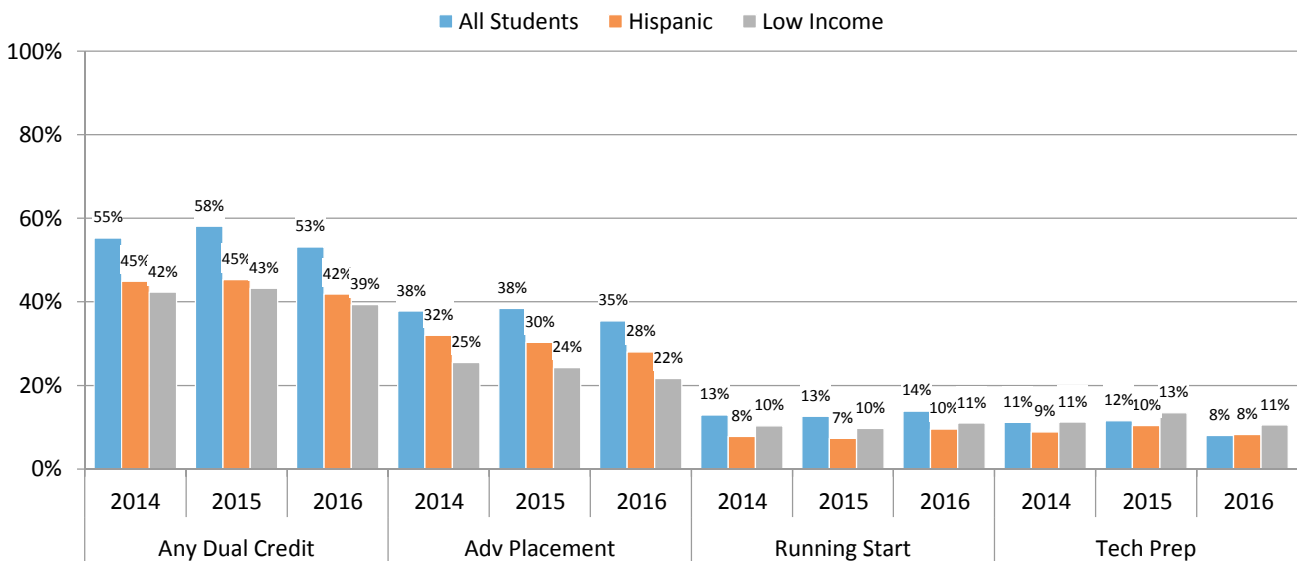
Advanced Placement	912	1226	1445	1472	1390
College in the HS	--	--	66	216	87
Running Start	453	489	495	482	543
Tech Prep	740	344	426	444	316



Percent of All High School Students Enrolled in Dual Credit Courses by School Year



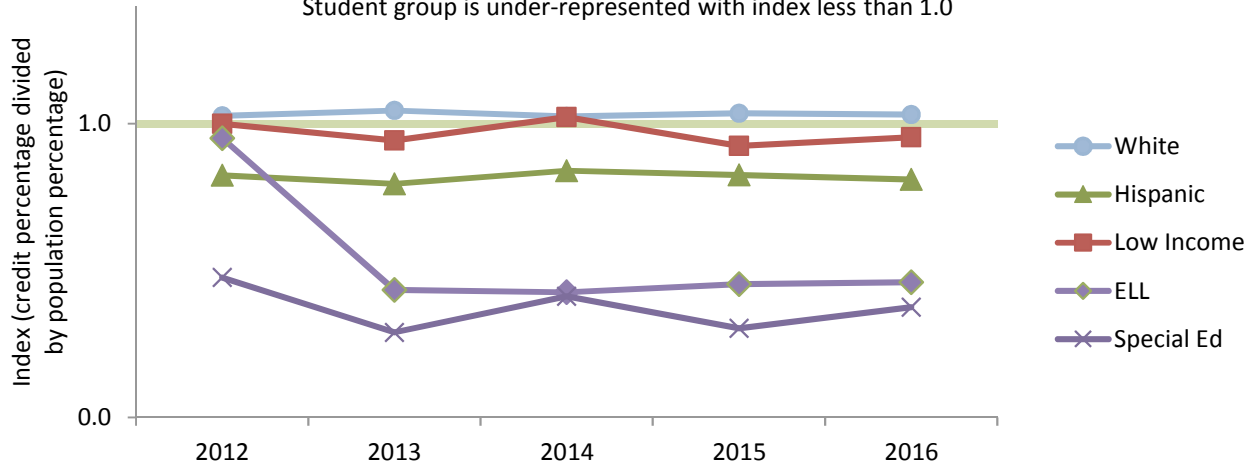
Percent of Students Enrolled in Dual Credit by Course Type and School Year



2) High School Dual Credit Representation by Student Groups and Districts

Bellingham School District Dual Credit Representation

Student group is under-represented with index less than 1.0

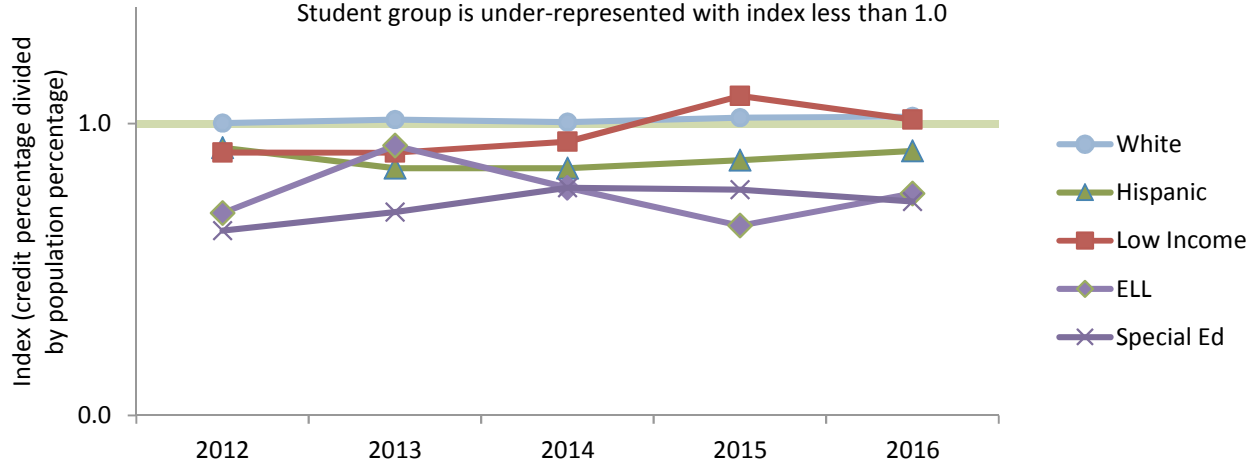


Percent of Students Enrolled in Dual Credits and Overall Student Population

	2012		2013		2014		2015		2016	
	Credits	Base Pop	Credits	Base Pop	Credits	Base Pop	Credits	Base Pop	Credits	Base Pop
White	78%	76%	76%	72%	73%	72%	73%	70%	71%	69%
Hispanic	10%	13%	11%	13%	11%	14%	11%	14%	12%	15%
Low Income	31%	31%	28%	30%	29%	29%	29%	31%	30%	31%
ELL	2%	2%	1%	2%	1%	3%	1%	3%	1%	3%
Special Ed	5%	10%	3%	11%	5%	11%	4%	12%	4%	11%

Bellevue School District Dual Credit Representation

Student group is under-represented with index less than 1.0



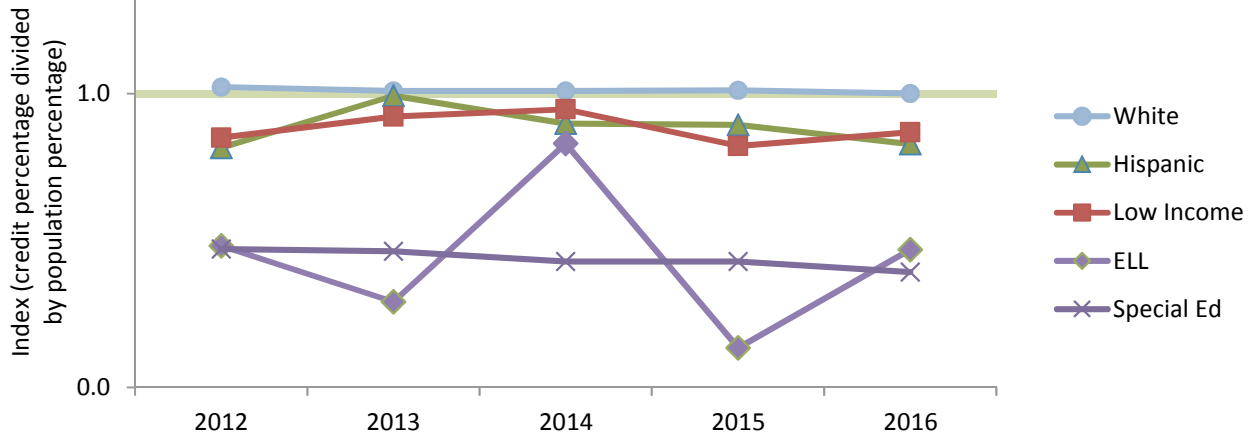
Percent of Students Enrolled in Dual Credits and Overall Student Population

	2012		2013		2014		2015		2016	
	Credits	Base Pop	Credits	Base Pop	Credits	Base Pop	Credits	Base Pop	Credits	Base Pop
White	50%	50%	49%	48%	47%	47%	46%	45%	45%	44%
Hispanic	9%	9%	8%	10%	9%	11%	9%	10%	10%	11%
Low Income	19%	21%	19%	21%	19%	20%	17%	16%	19%	19%
ELL	3%	5%	4%	5%	4%	5%	3%	5%	4%	6%
Special Ed	4%	7%	6%	8%	5%	7%	7%	9%	7%	9%

2) High School Dual Credit Representation by Student Groups and Districts

Olympia School District Dual Credit Representation

Student group is under-represented with index less than 1.0

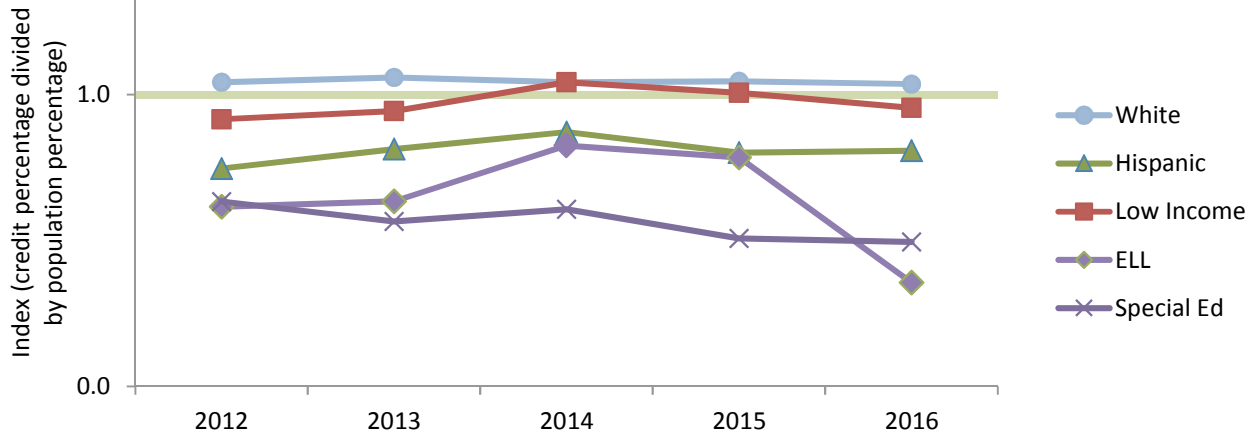


Percent of Students Enrolled in Dual Credits and Overall Student Population

	2012		2013		2014		2015		2016	
	Credits	Base Pop	Credits	Base Pop	Credits	Base Pop	Credits	Base Pop	Credits	Base Pop
White	75%	74%	73%	73%	72%	72%	72%	72%	71%	71%
Hispanic	6%	8%	8%	8%	8%	9%	8%	9%	8%	9%
Low Income	19%	22%	19%	21%	20%	22%	18%	22%	19%	22%
ELL	1%	1%	0%	1%	1%	1%	0%	1%	0%	1%
Special Ed	4%	8%	4%	8%	4%	8%	4%	9%	4%	10%

Shoreline School District Dual Credit Representation

Student group is under-represented with index less than 1.0



Percent of Students Enrolled in Dual Credits and Overall Student Population

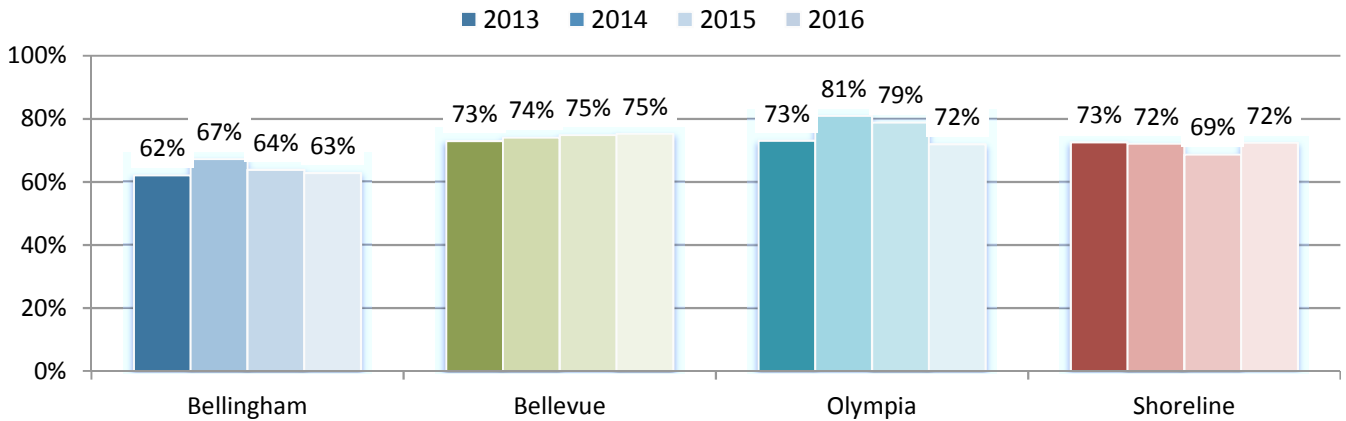
	2012		2013		2014		2015		2016	
	Credits	Base Pop	Credits	Base Pop	Credits	Base Pop	Credits	Base Pop	Credits	Base Pop
White	57%	55%	58%	55%	57%	55%	57%	55%	56%	54%
Hispanic	8%	11%	9%	11%	10%	11%	9%	12%	9%	12%
Low Income	23%	25%	24%	25%	27%	26%	26%	26%	24%	25%
ELL	3%	5%	4%	6%	4%	5%	3%	4%	1%	3%
Special Ed	6%	10%	6%	10%	6%	10%	5%	9%	5%	9%

3) Advanced Placement Exam Performance for Select Districts and Schools

Advanced Placement Exams by District

District	Test Takers				Total Exams Taken				# of Exams Scored 3, 4 or 5			
	2013	2014	2015	2016	2013	2014	2015	2016	2013	2014	2015	2016
Bellingham	1072	1189	1205	1138	1856	2026	2048	2022	1152	1362	1307	1270
Bellevue	3067	3172	3322	3539	6824	7043	7332	7899	4980	5217	5489	5944
Olympia	426	437	463	423	769	812	891	777	562	657	702	559
Shoreline	594	646	635	687	1021	1120	1130	1174	741	808	776	850

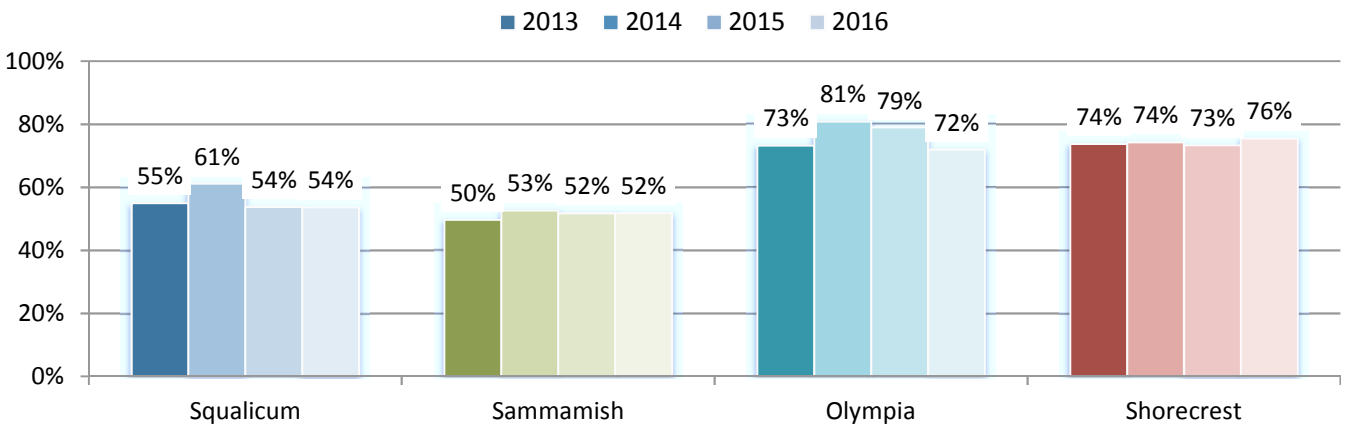
Percent of AP Exams Scored 3, 4 or 5



Advanced Placement Exams by School

High School	Test Takers				Total Exams Taken				# of Exams Scored 3, 4, 5			
	2013	2014	2015	2016	2013	2014	2015	2016	2013	2014	2015	2016
Squalicum	578	662	647	634	995	1071	1082	1109	547	655	582	595
Sammamish	558	539	463	499	999	992	939	929	496	522	486	481
Olympia	423	433	445	417	765	805	866	770	560	651	684	554
Shorecrest	292	285	283	270	476	463	457	433	351	344	335	327

Percent of AP Exams Scored 3, 4 or 5



4) Student Demographics for Comparable Schools Selection

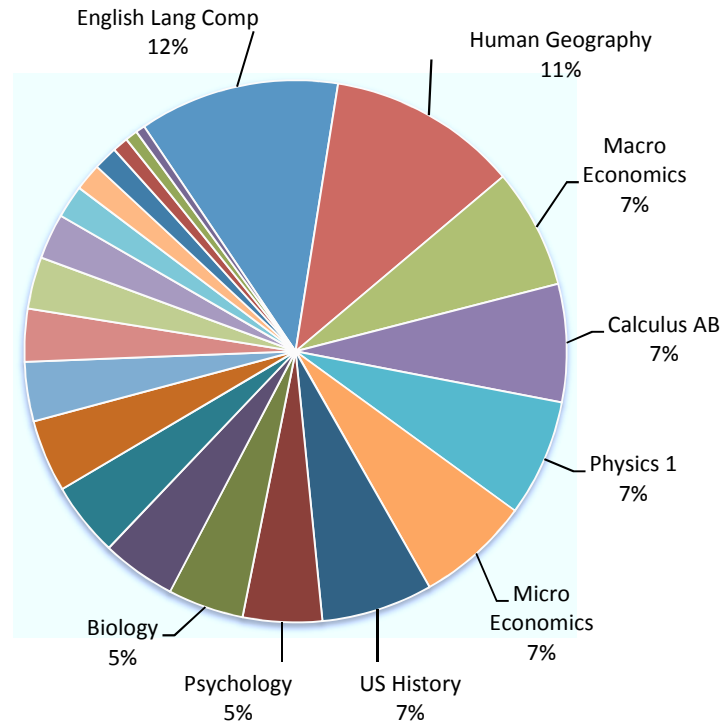
2015-16	High School: Squalicum	Sammamish	Olympia	Shorecrest
	District: Bellingham	Bellevue	Olympia	Shoreline
Enrollment				
Student Count	1,390	1,002	1,835	1,347
Gender				
Male	50.9%	51.6%	49.9%	51.7%
Female	49.1%	48.4%	50.1%	48.3%
Ethnicity				
American Indian / AK Native	1.6%	0.7%	0.3%	0.1%
Asian	9.6%	20.9%	9.9%	14.3%
Native Hawaiian / Pacific Isl	0.7%	0.2%	0.2%	0.4%
Black	1.2%	5.6%	1.6%	7.9%
Hispanic	19.6%	17.8%	8.5%	10.8%
White	60.4%	46.2%	70.4%	56.5%
Two or More Races	6.8%	8.7%	9.1%	9.9%
Special Programs				
Free or Reduced-Price Meals	40.2%	36.4%	18.1%	24.8%
Special Education	12.0%	16.0%	8.0%	7.6%
Transitional Bilingual	4.9%	8.7%	0.4%	3.0%
Migrant	0.7%	0.0%	0.1%	0.0%
Section 504	7.50%	9.80%	4.50%	8.00%
Graduation Rates				
4-Year Grad Rate (Class of 2015)	81.2%	85.9%	88.4%	85.6%
5-Year Grad Rate (Class of 2014)	83.0%	95.0%	91.3%	90.6%
Assessments				
10th Grade Biology EOC	79.2%	73.3%	82.4%	88.5%
11th Grade ELA	75.2%	65.7%	suppressed	suppressed
11th Grade Math	11.4%	suppressed	15.7%	suppressed

5) Bellingham School District Advanced Placement Exam Subjects and Success

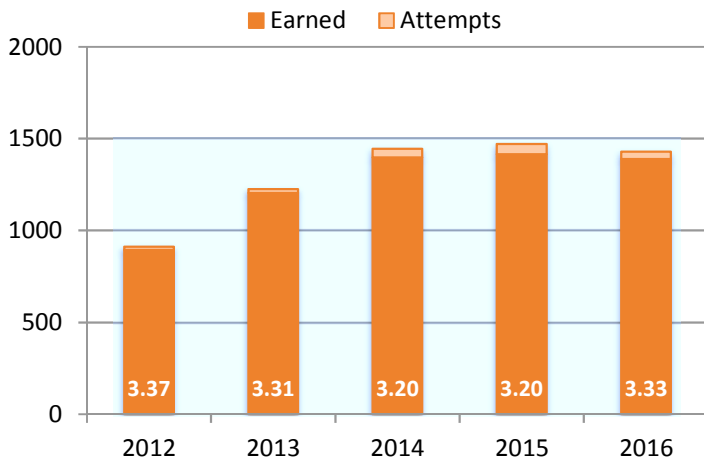
2016 AP Exam Counts and Success

	Total Exams	% Scores 3,4 or 5
Biology	92	65%
Calculus AB	143	60%
Calculus BC	33	85%
Chemistry	90	61%
Computer Sci A	40	63%
English Lang Comp	243	67%
English Lit Comp	72	85%
Environ Science	88	56%
French	15	60%
Human Geography	231	46%
Macro Economics	145	50%
Micro Economics	138	49%
Physics 1	142	61%
Physics 2	55	89%
Physics C: Mech	29	76%
Psychology	96	42%
Spanish	64	94%
Statistics	63	71%
Studio Art 2D	11	73%
US Gov Politics	19	95%
US History	135	68%
World History	90	80%
Total Exams	2,036	63%

2016 AP Exams by Subject



Count of Students Attempting and Earning Credit in an AP Course and GPA



AP Course Participation and Success

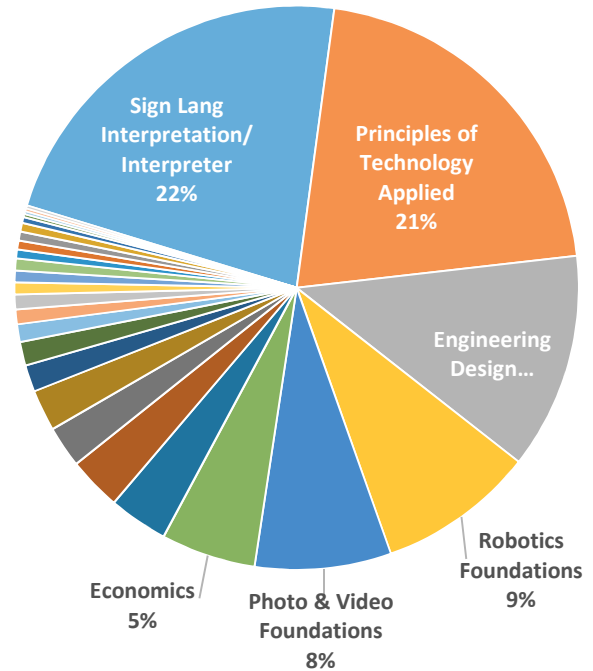
	2012	2013	2014	2015	2016
Attempt Course(s)	912	1226	1445	1471	1390
Earned Credit(s)	894	1205	1398	1415	1351
Passing Rate	98%	98%	97%	96%	97%
Grade Point Ave	3.37	3.31	3.20	3.20	3.33

6) Bellingham School District Career and Technical Education Participation

Number of CTE Completers by Areas of Study

	2014	2015	2016
Sign Lang Interpretation/ Interpreter	53	45	34
Principles of Technology Applied	31	52	41
Engineering Design	34	14	25
Robotics Foundations	15	26	12
Photo & Video Foundations	18	14	14
Economics	10	12	10
Computer Programming	4	2	14
Visual Communications	9	3	6
Introduction to Marketing	2	4	8
Publishing	3	1	10
Computer Install & Repair Techn	0	5	4
Manufacturing Foundations	0	2	6
Business Math	1	0	5
Forensic Science Tech/CSI	5	0	0
Office User Specialist	0	2	3
Career Choices	0	4	0
Financial Math	0	1	3
Video Game Design/Comp Animation	1	0	3
Environmental Studies	0	0	3
Foods & Related Culinary Arts	2	0	1
Technical Communication	1	2	0
Web/Digital/Multimedia & Info Design	1	1	1
Sports Medicine	0	0	2
Accounting	0	1	0
Independent Living	0	0	1
Marketing Operations	0	0	1
Technical Theater/Design Tech	0	1	0
Total Completers	190	192	207

CTE Completers 2014 to 2016
Top Program Areas



CTE Program Completion

	2014	2015	2016
CTE Concentrators	461	580	647
CTE Completers	190	192	207
Industry Certificates	19	25	50

Number of Industry Certificates by Area

	2014	2015	2016
Office User Specialist	8	20	17
Sports Medicine	0	0	24
l Related Culinary Arts Foundations	0	5	9
Food Production and Services	11	0	0
Total	19	25	50

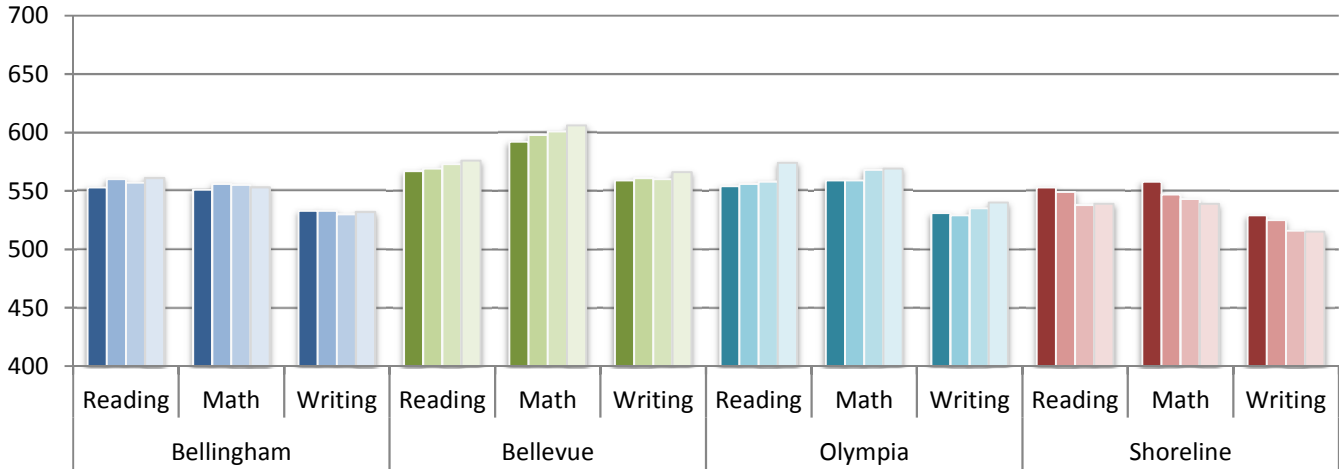
7) SAT Exam Performance by District and School

SAT Exams by District

District	Reading Mean				Math Mean				Writing Mean			
	2013	2014	2015	2016	2013	2014	2015	2016	2013	2014	2015	2016
Bellingham	553	560	557	561	551	556	555	553	533	533	530	532
Bellevue	567	569	573	576	592	598	601	606	559	561	560	566
Olympia	554	556	558	574	559	559	568	569	531	529	535	540
Shoreline	553	549	538	539	558	547	543	539	529	525	516	515

SAT Mean Scores by District

■ 2013 ■ 2014 ■ 2015 ■ 2016



SAT Exams by School

High School	Reading Mean Score				Math Mean Score				Writing Mean Score			
	2013	2014	2015	2016	2013	2014	2015	2016	2013	2014	2015	2016
Squalicum	535	536	538	520	543	545	540	522	516	509	517	501
Sammamish	515	522	531	513	531	542	533	533	496	513	510	497
Olympia	562	565	573	579	572	579	585	579	535	535	551	553
Shorecrest	556	563	541	549	559	560	538	549	535	541	512	524

SAT Mean Scores by School

■ 2013 ■ 2014 ■ 2015 ■ 2016

