

THIS TRUE S&B & S&A
 INCL. LAYOUT
 (1) 8'x12' SECTION
 SPACE FOR 2 MORE
 14'-16' 8'x8' REST
 @ 4'x8'.

Zervas Group Architects
 209 Lowell Street
 Bellingham, Washington 98228
 P. 360/733-7174
 F. 360/733-2499
 www.zervasgroup.com

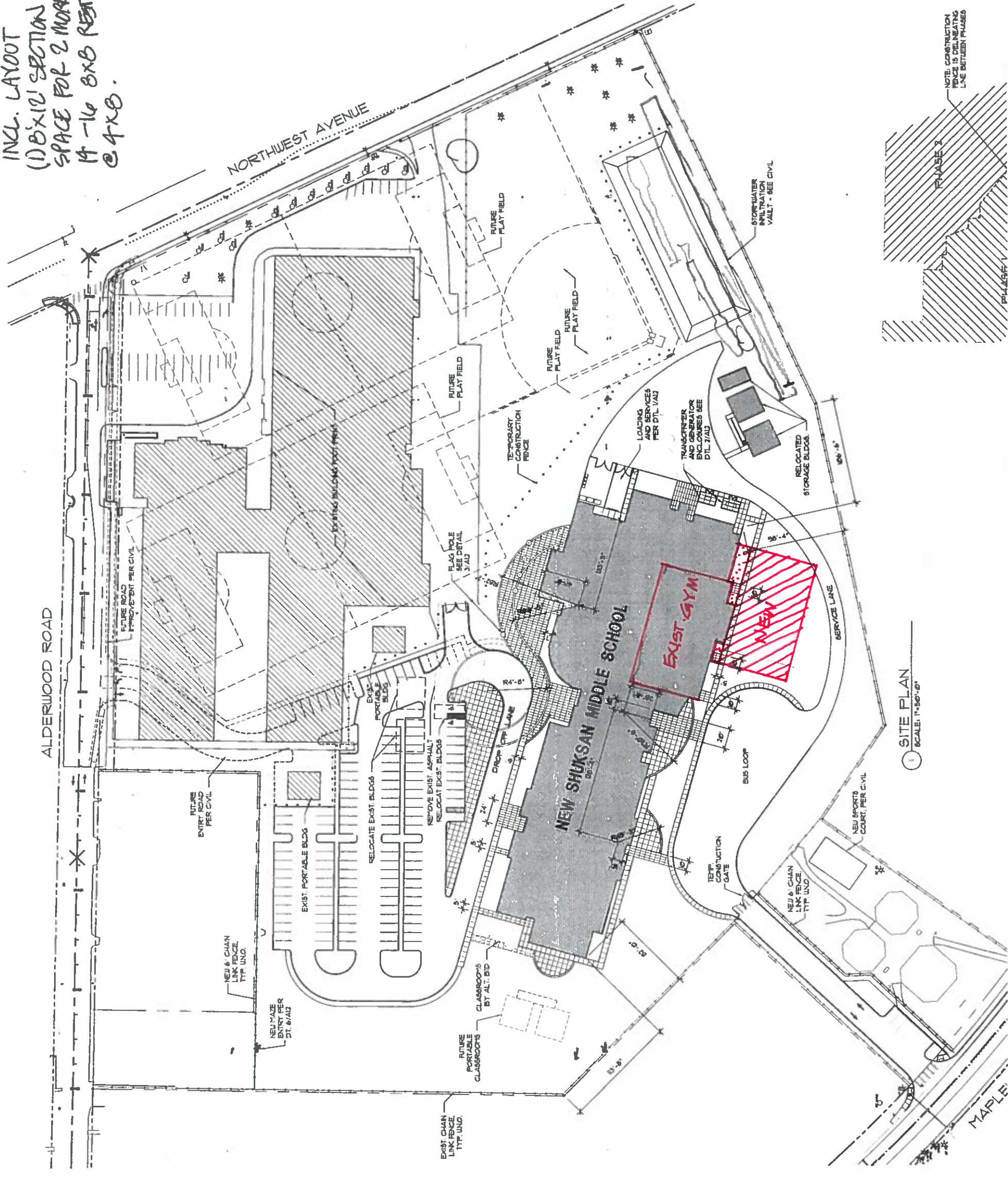
Architectural
 Interior Design
 Planning

BID SET

SCALE: 1"=50'-0"
 0 50'

North

**SHUKSAN
 MIDDLE
 SCHOOL**
 BELLINGHAM
 PUBLIC SCHOOL
 DISTRICT



1 SITE PLAN
 SCALE: 1"=50'-0"

