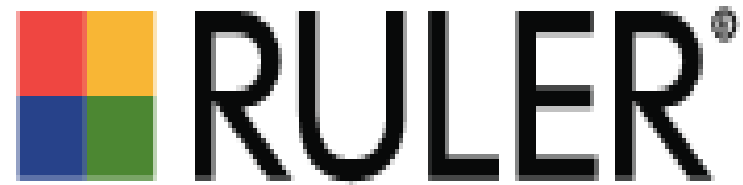


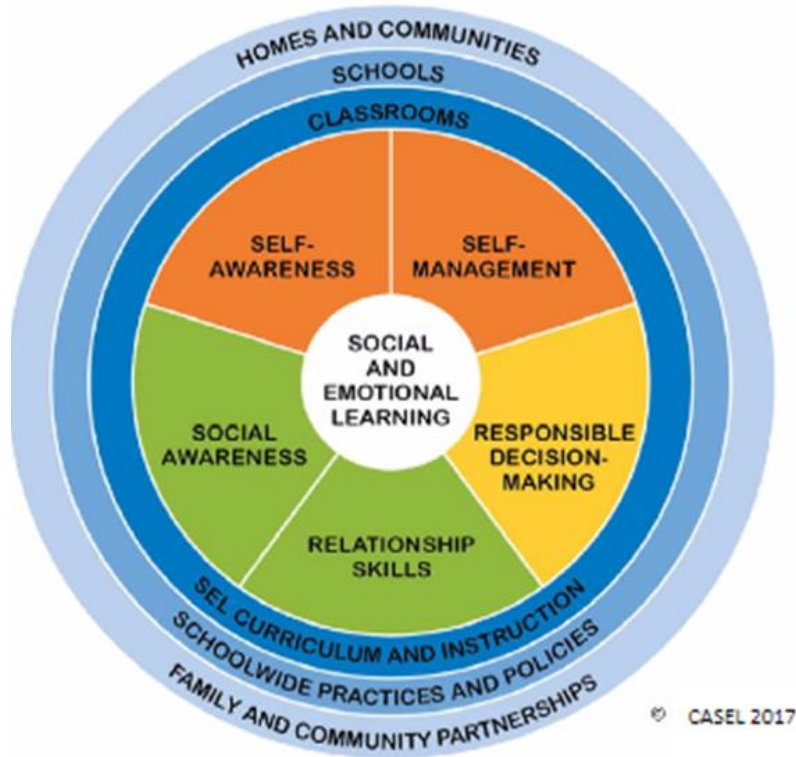
# Middle School Science and Social Emotional Learning Instructional Materials

Charisse Berner and Trina Hall,  
Directors of Teaching and Learning  
Bellingham Public Schools

# Elementary & Middle School Social & Emotional Learning Curriculum



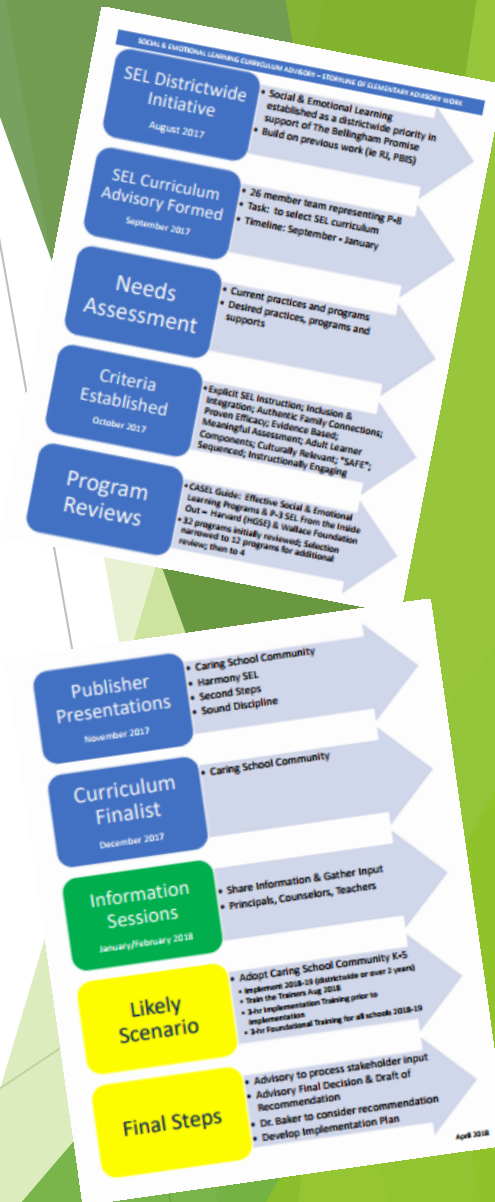
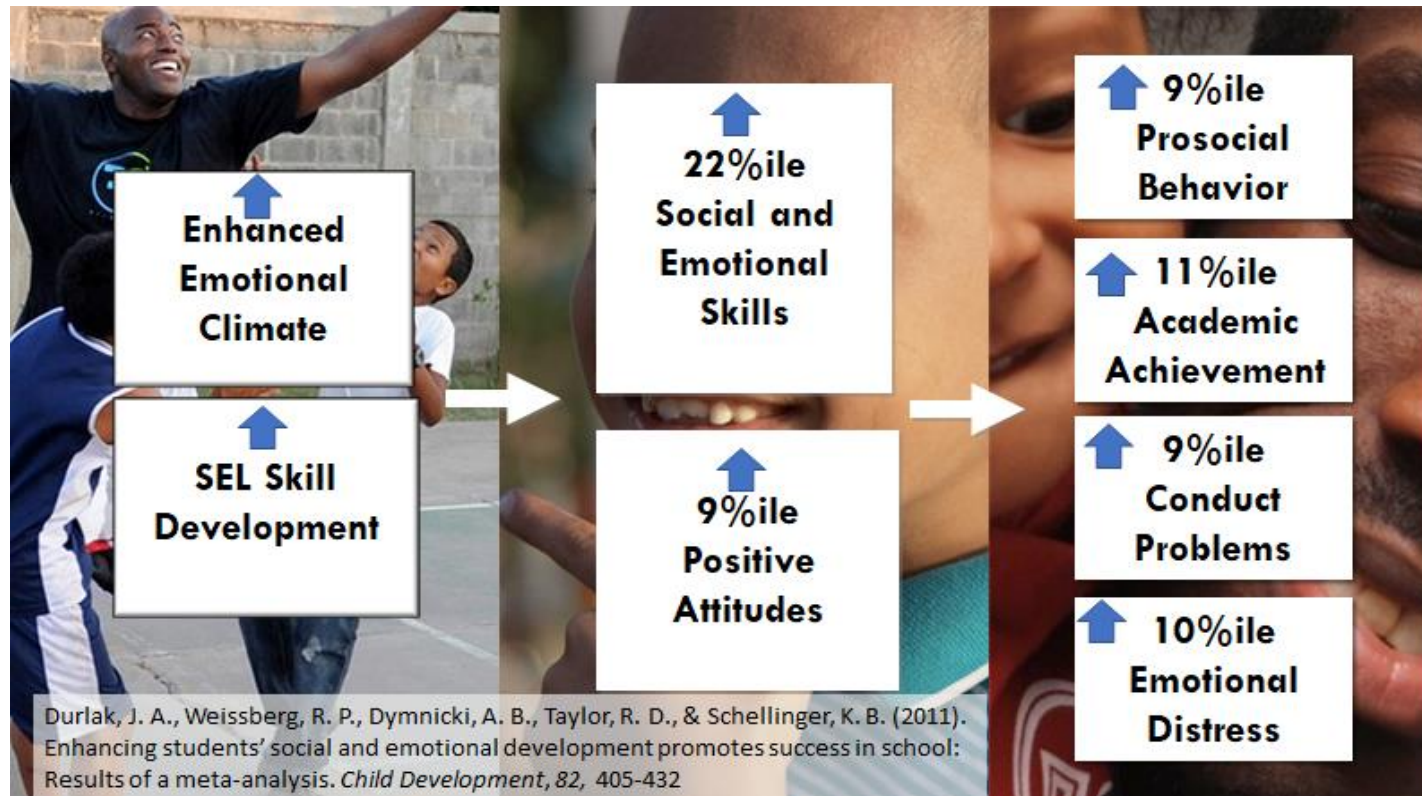
# P-8 Social & Emotional Learning Curriculum Advisory



September - January  
26 members

Including teachers, counselors,  
specialists, admin & six  
parent/community members

# SEL Process Thus Far



Community Review & Input Open through May 11

# Additional Steps in the Process for SEL

Submit formal  
recommendation  
to Dr. Baker

Develop  
professional  
development  
plan

Develop  
implementation  
plan

Staggered  
timeline of  
implementation

# SEL Celebrations! *Elementary*

## The Power of Community

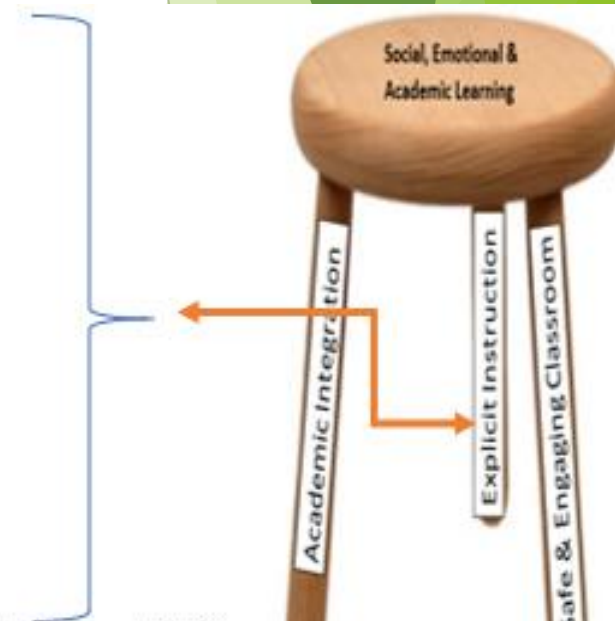
The *Caring School Community*® (CSC) program builds community among students, faculty, and families with common expectations, language, and structures. Implemented schoolwide, CSC improves the school climate, making it a place where the sense of connectedness is felt throughout the entire school.

Caring School Community®  
SECOND EDITION

### Guiding Principles

1. *Relationships*
2. *Autonomy & Influence*
3. *Collaboration*
4. *Ideals & Common Purpose*

- 1) **Morning Circle**  
3-5x/week
- 2) **Class Meeting**  
1x/week
- 3) **Closing Circle**  
3-5x/week



# SEL Celebrations! *Elementary*



## **Our Mission**

Sound Discipline improves outcomes for youth by transforming educators, care givers and guardians by giving them the resources to build respectful, equitable learning communities.

## School-based Professional Development

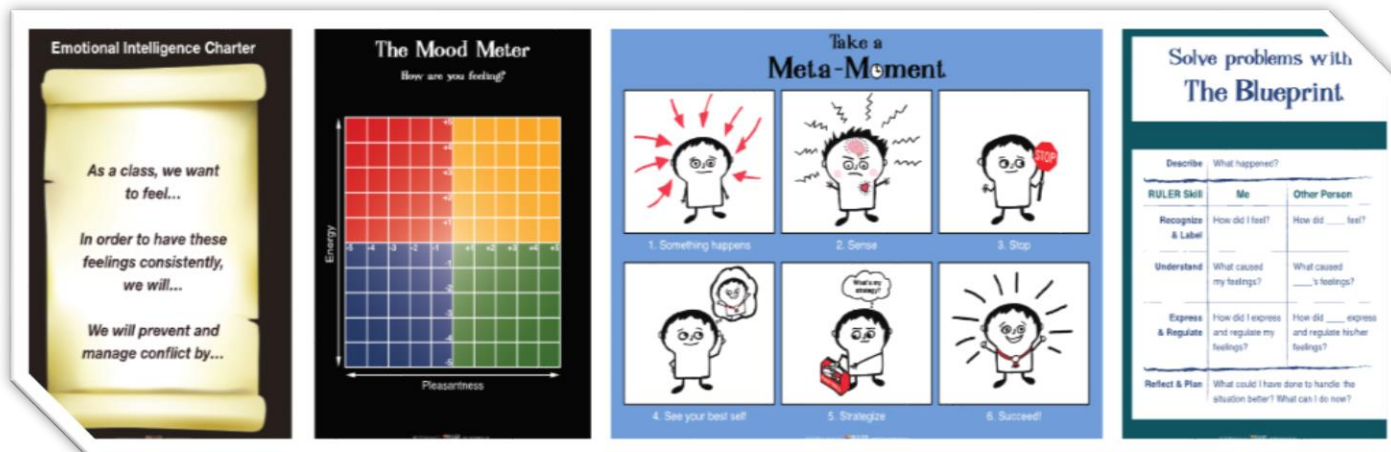
### Topic Choices:

- Positive Discipline
- Schoolwide Systems
- Being Trauma Informed
- Building Resiliency



# SEL Celebrations! Middle School

## ANCHOR TOOLS



## IMPACT

### Students:

- Less anxious and depressed
- More developed emotional skills
- Fewer attention problems
- Better academic performance
- Greater leadership skills

### Teachers:

- More engaging, supportive, and effective

### Classrooms/Schools:

- More positive climates and less bullying

## Building Skills in Adults and Students



# SEL Celebrations!

## *Middle School*

WEB & LINK -  
TRANSITIONS



### **WEB (Where Everybody Belongs)**

WEB, an acronym for Where Everybody Belongs, is a middle school transition program that welcomes 6th/7th graders and makes them feel comfortable throughout the first year of their middle school experience. Members of the 8th grade class are trained to act as positive role models, motivators, leaders and teachers who guide the 6th/7th graders to discover what it takes to be successful in middle school. Schools have reported that WEB has helped reduce bullying and discipline issues, as well as increased student safety and connection for the whole school.



Caring School Community®  
SECOND EDITION